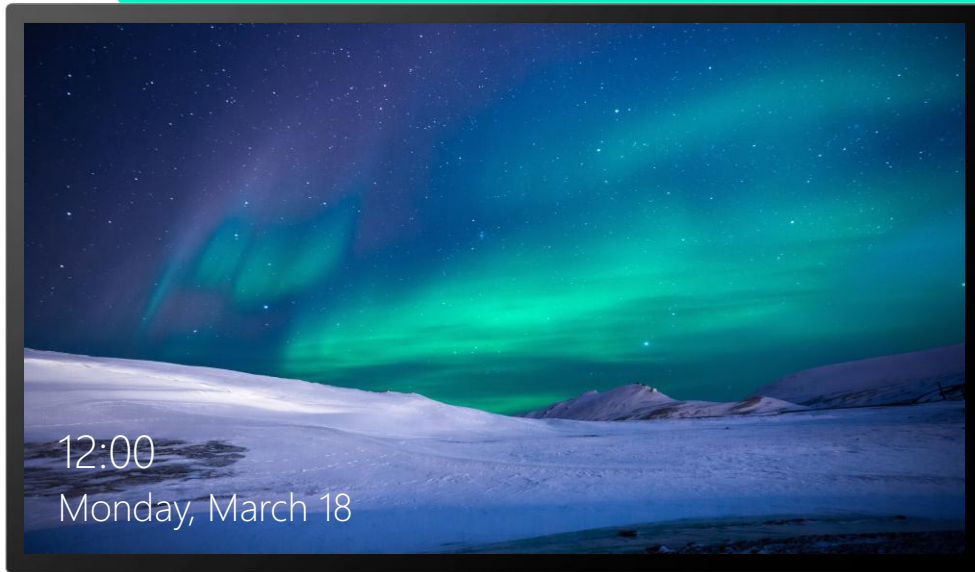




Designed for everyone



Pro Series

CAPACTIVE TOUCH

AVAILABLE IN 55" AND 65"

COMPATIBLE WITH



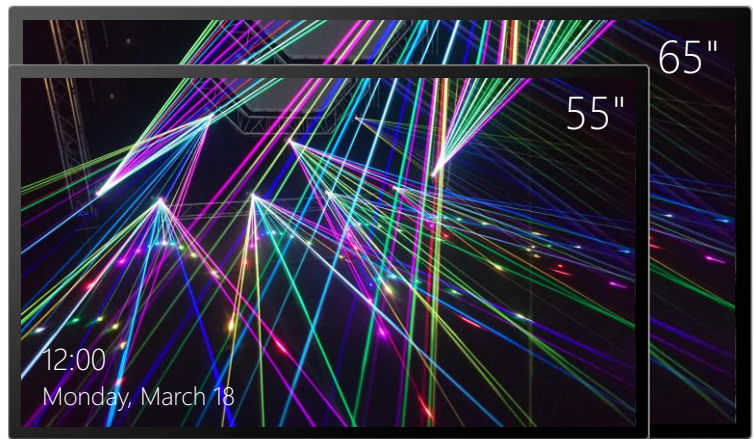
DISCOVERIBT.COM/PRO-SERIES

V.Z/GLOBAL

Pro Series

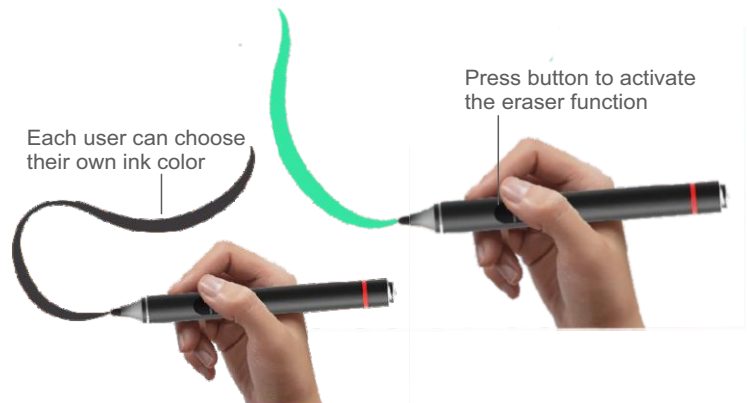
CAPACTIVE TOUCH

With integrated P-Cap technology the Pro Series offers you the ultimate touchscreen experience. Similar to the touch experience you get from premium touchscreen phones and tablets, experience greater writing fluidity and enhanced collaboration.



When appearances matter..

The beautifully designed flush narrow bezel and sliver trim distinguish the Pro Series from standard interactive displays.



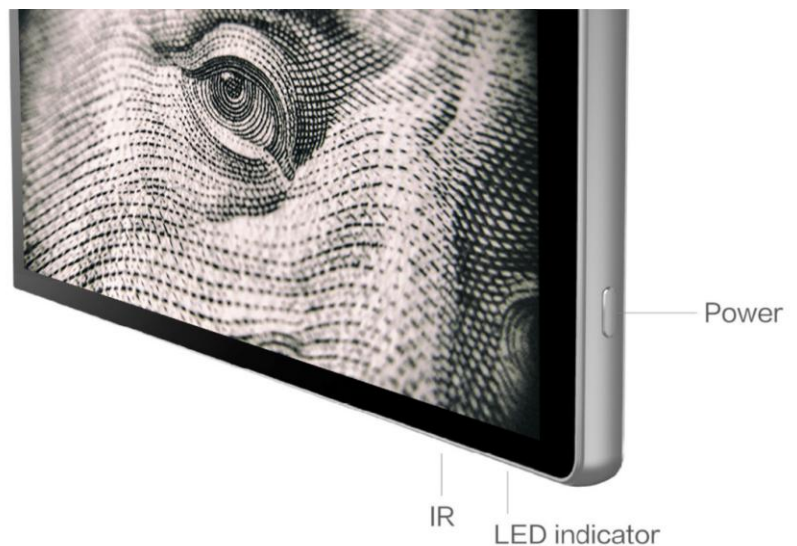
When details matter...

With palm rejection and 1024 pressure sensitivity, simply press for thicker or thinner lines. The two included active pens make it possible for two users to write on the same page using different colored ink.



Music to your ears...

The built-in subwoofer speaker with a wide frequency 100Hz to 20Khz provides an extraordinary, clear auditory experience.



Pro Series

CAPACTIVE TOUCH

A real visual feast...

Ultra 4K crystal clear display. Outstanding details and stunning visual representation of your content. The anti-glare coating means there is no need to turn off the lights or close the blinds.



Flexible and easy-to-use...

It's simple to connect an external device to the Pro Series. You can connect Chrome, Mac or Windows laptops (or PC's) to the Pro Series and use your software. You can also choose to integrate a Windows PC directly into the Pro Series removing the need for a separate laptop or PC and giving you an all-in-one solution.



Easy Collaboration...

Wirelessly screen cast up to four devices simultaneously on the Pro Series - great for sharing ideas. The included Hive software also makes it possible for your audience to use their own devices to participate on a shared digital whiteboarding page for everyone to see.



Powered by
Android 7.0
Mini PC



Option to
Integrate a
Windows PC



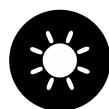
20 Point
Touch



Extensive
Connectivity



Low Power
Consuming



Anti-Glare
Glass



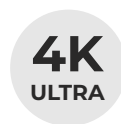
2 Active Pens
Independent
inking colors



Impressive
Sound

Pro Series

CAPACTIVE TOUCH



Designed for everyone

	55" Pro Series	65" Pro Series
DISPLAY		
Size and Screen Type	55" IPS	65" IPS
Aspect Ratio	16:09	16:09
Resolution	4K Ultra HD 3840 x 2160	4K Ultra HD 3840 x 2160
Brightness (typical)	350cd/m2	350cd/m2
Brightness (minimum)	300cd/m2	300cd/m2
Contrast Ratio	1200:1	1200:1
Response Time	6ms	6ms
Refreshing Frequency	60Hz	60Hz
Scratch Resistant Toughened Glass	✓ Anti-Glare	✓ Anti-Glare
Viewing Area	1209.6*680.4mm	1428.48*803.52mm
Pixel Pitch	0.315*0.315mm	0.372*0.372mm
Viewing Angle	178°	178°
AUDIO		
Enhanced 2.1 Channel Audio	2*10W and 1*15W Subwoofer	2*10W and 1*15W Subwoofer
FEATURES		
Capacitive Touch Technology	✓	✓
Touch Points	20	20
Writing Points	10	10
Accuracy with Finger	+/- 2mm (over 90% of the area)	+/- 2mm (over 90% of the area)
Accuracy with Active Capacitive	+/- 1mm (over 90% of the area)	+/- 1mm (over 90% of the area)
Wireless Screen Mirroring for 4 devices	✓	✓
Intellitouch Display for easy navigation	✓	✓
1024 Pressure Sensitivity	✓	✓
Palm Rejection Technology	✓	✓
Two Active Pens that can be used simultaneously	✓	✓
CONNECTIVITY		
HDMI In	2	2
HDMI Out	1	1
USB 2.0 (incl. 2 at the front)	4	4
USB 3.0	1	1
Touch Out	2	2
VGA In	1	1
Audio In	1	1
Audio Out	1	1
AV In	1	1
Rs232	1	1
LAN	1	1
SPDIF	1	1
PHYSICAL SPECIFICATIONS		
Net Weight	29kg	45kg
Gross Weight	40.6kg	57kg
Dimensions (L x H x D)	1296 x 747 x 87mm	1493 x 872 x 88mm
Package Dimensions (L x H x D)	1428 x 845 x 220	1697 x 1039 x 220
VESA (H x V)	400 x 200	600 x 400
POWER		
Typical Power Consumption	250w	300w
Standby Mode	<0.5W	<0.5W
Power Requirements	AC100V ~ 240V, 50-60Hz	AC100V ~ 240V, 50-60Hz

Technical Specifications

Pro Series

CAPACTIVE TOUCH



Designed for everyone

Technical Specifications

	55" Pro Series	65" Pro Series
ANDROID		
Platform	7.0	7.0
CPU	ARM Cortex A73 Dual Core	ARM Cortex A73 Dual Core
GPU	Quad Core Mali 450MP	Quad Core Mali 450MP
RAM	2GB	2GB
ROM	16GB	16GB DDR4
SUBSCRIPTION FREE SOFTWARE		
Hive (incl. SMART & Promethean file opening. Dropbox, One Drive and Google Drive Integration)	2 Hive Windows licences	2 Hive Windows licences
- includes Nexus Collaboration and Response	5 participant licences	5 participant licences
Android Easy Cloud Email	✓	✓
Connect	✓	✓
iFlipChart	✓	✓
QuickNote	✓	✓
Note	✓	✓
ACCESSORIES		
Active Pens	2	2
HDMI/VGA/USB/Power Cables	✓	✓
Remote Control & Batteries	✓	✓
OPTIONAL EXTRAS		
Intel Integrated Windows PC Module	Intel i5 and i7 options available	Intel i5 and i7 options available
Wi-Fi	Available	Available
PRO SERIES CODE	PRO55/CE/7.0/20NP	PRO65/CE/7.0/20NP



	A	B	C	H1	H2	H3
Pro Series 55"	29.9 mm	29.9 mm	37.3 mm	19.3 mm	40.5 mm	85.8 mm
Pro Series 65"	32.2 mm	32.2 mm	36.9 mm	21 mm	42.1 mm	87.4 mm